

**Fairfield Mines, Inc.**

*Quality, Safety, Accountability - Since 1982*

# **Loader Operator TRAINING MANUAL**

**(Sample Pages)**

## **992 G Wheel Loader**



Sample Training Materials Prepared By:

**North Pacific Training and Performance, Inc.**

1660 - 401 W. Georgia St., Vancouver, British Columbia, Canada V6B 5A1

Telephone: 604-513-1410 • Fax: 604-513-1450 •

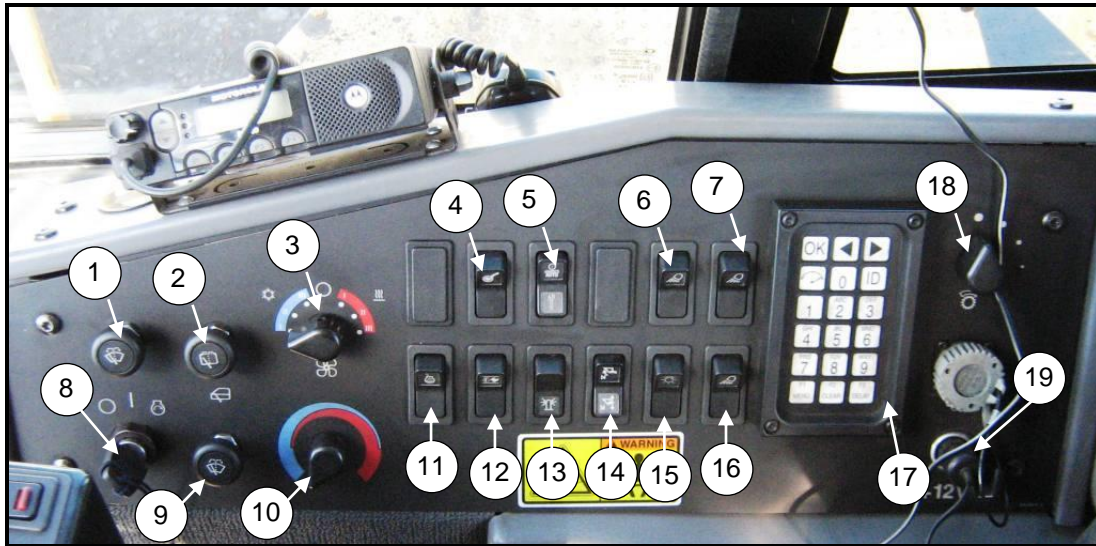
Email: [info@north-pacific.ca](mailto:info@north-pacific.ca) • Website: [www.north-pacific.ca](http://www.north-pacific.ca)

# **Loader Operator Training Manual 992G Wheel Loader**

<b>Module 1: INTRODUCTION.....</b>	<b>8</b>
<b>The Importance of the 992G Loader at Fairfield Mines .....</b>	<b>9</b>
<b>Loader Operator Competency Profile Chart .....</b>	<b>10</b>
<b>What I Bring to this Class .....</b>	<b>12</b>
<b>Expectations of Trainers and Trainees .....</b>	<b>13</b>
<b>Loader Operator Duties and Responsibilities .....</b>	<b>14</b>
<b>Loader Operator-Specific Safety Review .....</b>	<b>14</b>
<b>Module 2: Tools and Materials.....</b>	<b>20</b>
<b>Tools and Materials .....</b>	<b>21</b>
<b>Module 3: 992G Wheel Loader Systems &amp; Components .....</b>	<b>22</b>
<b>992G Wheel Loader Overview .....</b>	<b>23</b>
<b>Cab Components .....</b>	<b>26</b>
<b>Safety Devices .....</b>	<b>35</b>
<b>Module 4: Loader Operating Concepts .....</b>	<b>39</b>
<b>Loader Safety Systems .....</b>	<b>40</b>
<b>Loader Systems and Controls .....</b>	<b>45</b>
<b>Loader Inspection and Start-Up.....</b>	<b>53</b>
<b>Loader Operating Procedures.....</b>	<b>71</b>
<b>Loading Material.....</b>	<b>83</b>
<b>Module 5: Documents, Forms, Checklists .....</b>	<b>95</b>
<b>Documents, Forms, Checklists .....</b>	<b>96</b>
<b>Module 6: Loader Operating Procedures .....</b>	<b>99</b>
<b>Loader Operating Procedures.....</b>	<b>100</b>

## Control Switches and Gauges

### Control Panel

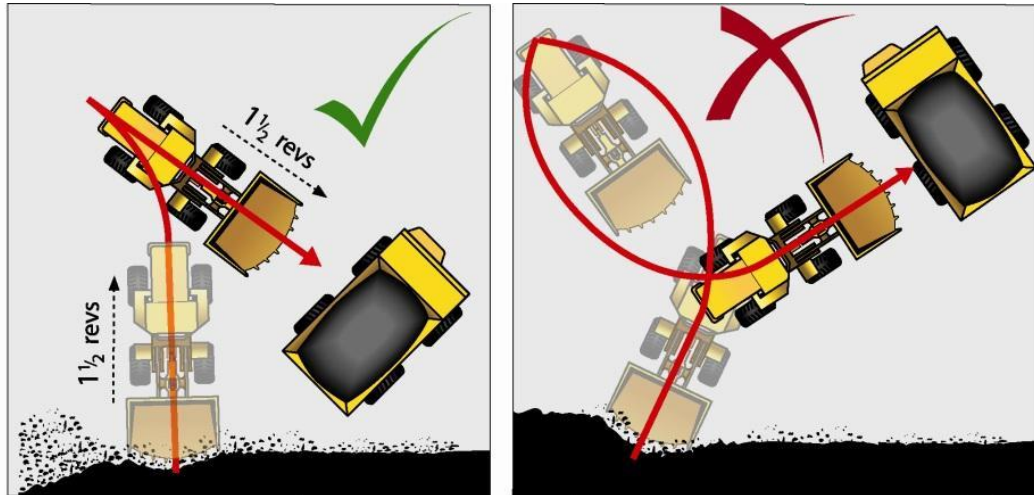


#### Component

1. Front Wiper/Washer	8. Engine Start Switch	15. Kickout Set Switch
2. Rear Wiper/Washer	9. Quarter Panel Window Washer	16. Stairway Access Light Switch
3. Heating and Air Conditioning Switch	10. Temperature Control	17. VIMS Keypad Module
4. Quickshift Switch	11. Ether Starting Aid Switch	18. Rimpull Selection Switch
5. Ride Control Switch (Bucket Float)	12. Throttle Lock Switch	19. 12 Volt Power Supply
6. Front Floodlight	13. Beacon Switch	
7. Rear Floodlight	14. Kickout Set Switch	

## Truck Spotting

Truck spotting is the responsibility of the loader operator.



*Truck Spotting*

To make it as easy as possible for the truck driver, be loaded and in position when the truck approaches. Let the trucks back up to you.

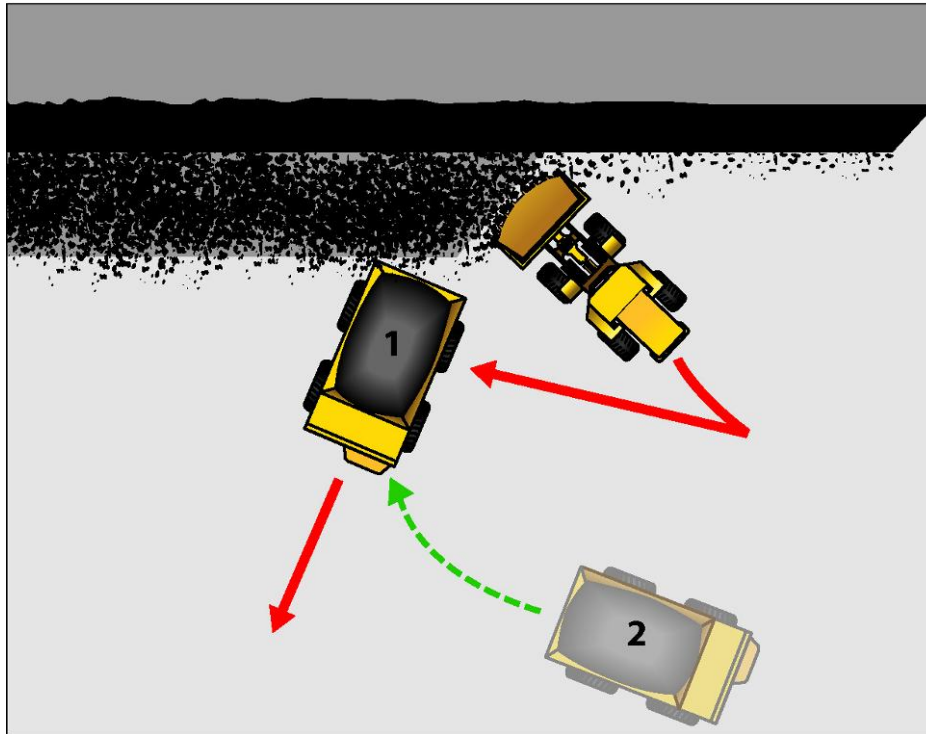
You need to be in a position that allows you to make a tight V-pattern between the material, your pivot point and the truck. Your tires should rotate no more than one to 1.5 times in both directions—the shorter the better. Experienced operators are often at  $\frac{3}{4}$  to  $1\frac{1}{4}$  tire revolutions.

Work left to right to create a pocket for the trucks to back into at a 45 degree angle.

Avoid the pattern on the right in the diagram above. If you have to make 180 degree turns on every pass, you will slow your cycle times and waste a lot of fuel.

## Parallel Dig

Sometimes there are situations where it is difficult for the loader to work left to right. In these cases it is best to perform parallel digs, which run right to left. The dig face is narrow.



*Parallel Dig*

In a parallel dig, there is usually no pocket, so position the trucks at 15 to 20 degrees from perpendicular. That sets up the V-pattern for the loader.

## Illustrated Loading Sequence

The following series of photos demonstrates a typical loading sequence.



*Truck approaches front-end loader from the left side. Loader operator uses his bucket to guide the truck.*



*Truck operator positions truck so that he can back in keeping the loader on his good (left) side.*



*Truck operator backs truck in square to the loader, directly under the bucket.*



*Loader operator dumps first load in truck.*



*Truck operator waits in truck cab while loader fills the truck bed.*



*Loader operator continues to load truck.*



*Fully loaded truck leaves for the dump site.*